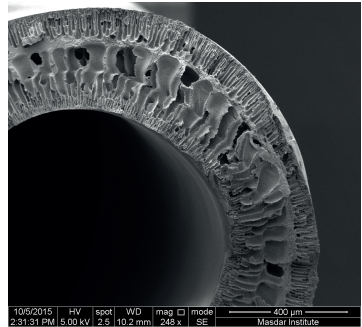
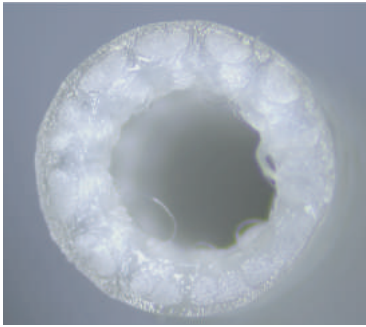
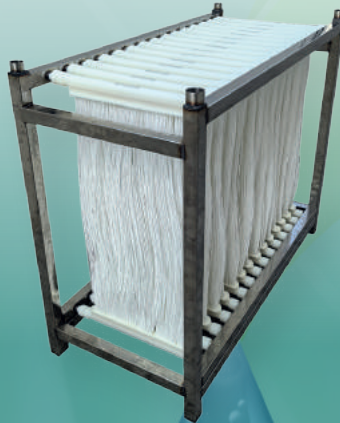
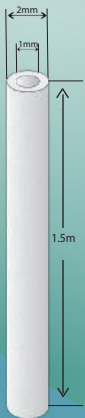
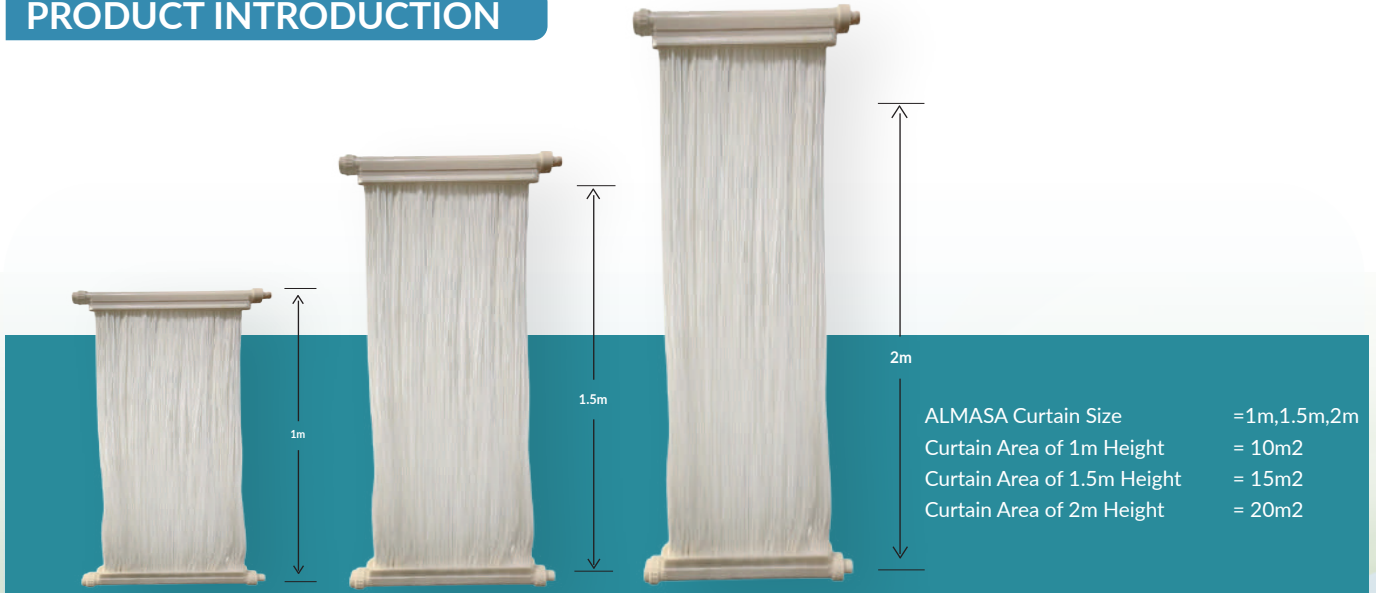


TECHNICAL DATA SHEET



Project		ENV-10	AM-40	AM-160
Module Parameters	Membrane material	PVDF		
	Tensile strength	≥200		
	Effective membrane area(m ²) of curtain	10	15	20
	Intercept aperture(um)	0.03		
	ID/OD of membrane(mm)	2.0/2.1		
Curtain Size	L*W*H(mm)	534*46*1000	534*46*1500	534*46*2000
	Connector Specification	DN32 Socket interface		
Module Size	W*H*L	70*140*110*	70*175*110x	70*240*110x
Curtain weight	Moist Curtain(kg)	10	13	15
Operation Condition	Filteration Mode	Cross flow filtration of suction type/Dead end filtration of suction type		
	Flux (LMH)	08~20		
	Pressure TMP(KPa)	<500 mbar suction, <2000 mbar backwash		
	Module uniform aeration rate(Nm ³ /h)	2~6		
	Application Temperature Range(C)	5~55		
	Applicable sludge Concentration(mg/L)	<12000		
Cleaning Conditions	pH range	2~12		
	Maximum tolerance concentration of NaClO (ppm)	5000		
Produced Water performance	Produced Water Turbidity (NTU)	<1		
	TSS	<2 mg/L		

PRODUCT INTRODUCTION











Area = Diameter * 3.14 * H

$$0.002 * 3.14 * 1.5 = 0.00942\text{m}^2 \quad 15\text{m}^2 = 1592 \text{ pc's Hollowfiber membranes}$$

$$0.00942 * 1,592 = 15\text{m}^2$$

ADVANTAGES OF MONYIN MEMBRANE

-  Vastly improved output water quality. BOD ≤ 5 ppm COD ≤ 10 ppm , TSS ≤ 2 ppm.
-  70% Reduction of chemical consumption.
-  Ease of operation, maintenance and startup.
-  65% Reduction of sludge content.
-  Modification and Retrofitting, compatible.
-  20% Reduction of power consumption.
-  30% Reduction of operating cost.
-  60% Reduction of Footprint.